

## Acknowledgement of Country



Mater acknowledges the people and the Elders of the Aboriginal and Torres Strait Islander Nations who are the Traditional Owners of the land and seas of Australia.

## Final RMO Education session for 2023!

130 education sessions were delivered this year. A huge thanks to our presenters!

Tuesday 12 December 2023

Topic: 2024 Mandatory Training Drop in Sessions  
(Doctors remaining at Mater in 2024)

Thursday 14 December 2023

Topic: Prize Giving and Lunch  
Location: RMO Common Room

## MEU Office Christmas Closure

Monday 25th Dec	CLOSED
Tuesday 26th Dec	CLOSED
Wednesday 27th Dec	CLOSED
Thursday 28th Dec	CLOSED
Friday 29th Dec	CLOSED
Monday 1st Jan	CLOSED



The MEU will reopen on **3rd January 2024**. Emails will NOT be monitored during this time.

For urgent matters pertaining to covid leave, workforce or wellbeing, please escalate via switch to the DCT, Dr Gian Capati.

Just a reminder that Mater has a Wellbeing Resource for Resident Medical Officers document which lists a range of support contacts and resources available for RMOs.

Reflecting on the year, it's clear to see how hard you've all worked. Your drive and determination helped us to get where we are today, and we couldn't have done it without you. Your dedication and commitment shine through in all that you do, and we thank you. This year in particular your high levels of loyalty to the Mater has been appreciated. Wishing you and your families a wonderful Christmas and a Happy New Year.



Your Medical Education Team



## 2024 Medical Orientations

- Intern Orientation week 15th January - 19th January 2024
- JSO Orientation 22nd January 2024
- CCSO Orientation 22nd January - 24th January 2024
- Registrar Orientation 5th February 2024

## MEC Summary

### 2024 Changes - National Framework for Prevocational Medical Training Implementation

The main changes that will be implemented in 2024 include:



Term categories



Assessment domains & outcome statements



Assessment review panel



Supervisor training



EPA Assessments

During the year you must have exposure to the four clinical experience categories:

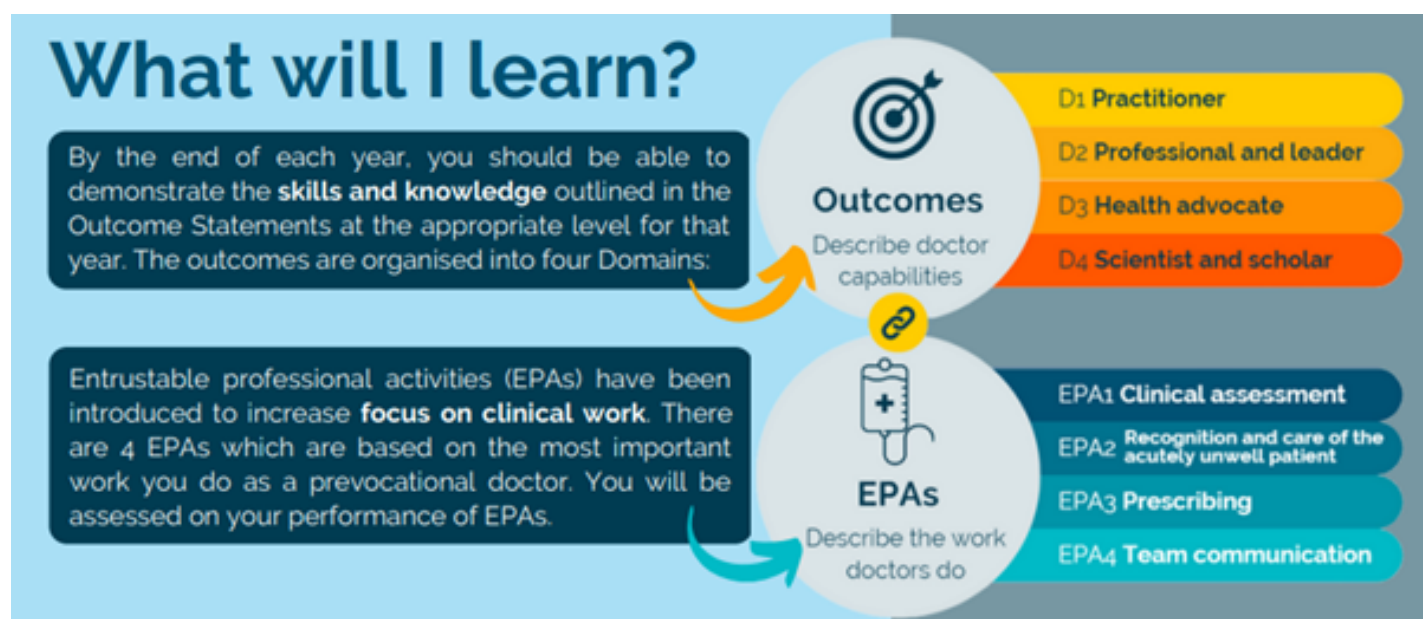
- A** patients presenting with undifferentiated illness
- B** patients with chronic illness
- C** patients with acute and critical illness
- D** peri-procedural patient care.

The term descriptions for your rotations will indicate which of these clinical experiences are covered (one or two per term). You also must have some exposure to work outside standard hours, with appropriate supervision. Your roster may include one or more service terms, such as night or weekend cover, or backfilling doctors on leave. A minimum of 50% of your intern year must be spent attached to a clinical team and a maximum of 20% of the year can be spent in service terms.

### Overview of the AMC prevocational outcome statements

<b>DOMAIN 1</b>  <b>Practitioner</b>	Describes the work expected of prevocational doctors in assessing and caring for patients including appropriately communicating, documenting, prescribing, ordering investigations and transferring care.
<b>DOMAIN 2</b>  <b>Professional &amp; leader</b>	Describes the professional dimension of the doctor. It includes the importance of ethical behaviours, professional values, optimising personal wellbeing, lifelong learning and teamwork.
<b>DOMAIN 3</b>  <b>Health Advocate</b>	Describes the doctor who applies whole-of-person care and partners with their patients in their care. The doctor recognises that broader determinants of health have tangible effects on their patients and takes account of their context as well as broader systemic issues.
<b>DOMAIN 4</b>  <b>Scientist &amp; Scholar</b>	Describes the doctor who applies and expands their medical knowledge and evaluates and applies relevant evidence to their clinical practice.

There are 21 outcome statements under the 4 domains. These are very similar to the previous domains, with new domains added, including outcomes related to cultural safety and Aboriginal and Torres Strait Islander Health.



If you would like further information, please see the video resources below:

[Introduction to the National Framework](#)

[Introduction to the EPAs](#)

[Assessment in 2024](#)

[Frequently Asked Questions – National Framework Implementation](#)



### Endorsements

- 2024 Supervisor Training Program (New accreditation framework)
- 2024 Registrar Orientation Program
- 2024 Intern Orientation Program
- 2024 JHO/SHO Orientation Program
- 2024 FEP Program
- 2024 Intern Teaching Program
- Assessment Review Panel, Assessment Appeals Panel & MEU Wellbeing Committee



### In Progress

- RMO IT access is in progress, with MEU continuing to liaise with IT
- Turn around times for scanning has been escalated, and is awaiting outcome
- RMO healthy meals: MEU are awaiting to hear response from property Services
- RPL Orientation Competencies is currently an ongoing development

For further detail, please contact your MEC representatives or the MEU.

### Furosemide Prescribing



Please find attached the link for instructions on [Furosemide \(Lasix\) Infusion Prescribing](#)

## Christmas Mass and Liturgies happening this Advent:

- Mater Redlands Chapel – Christmas Mass – Tuesday 12 December, 9am
- Mater Brisbane Hospital Chapel – Christmas Mass – Monday 18 December, 12.30pm
- Mater Brisbane Hospital Chapel – Christmas Mass – Tuesday 19 December, 12.30pm
- Mater Private Hospital Chapel – Christmas Mass – Tuesday 19 December, 1pm
- Mater Brisbane Hospital Chapel – Christmas Mass – Wednesday 20 December, 12.30pm
- Mater Springfield Chapel – Christmas Liturgy – Thursday 21 December, 9am
- Mater Brisbane Hospital Chapel – Christmas Mass – Thursday 21 December, 12.30pm
- Mater Brisbane Hospital Chapel – Christmas Mass – Friday 22 December, 12.30pm
- Mater Convent Chapel – Christmas Eve Mass – Sunday 24 December, 8am
- Mater Convent Chapel – Christmas Eve Mass – Sunday 24 December, 6pm
- Mater Convent Chapel – Christmas Day Mass – Monday 25 December, 8am
- Mater Private Hospital Chapel – Christmas Day Mass – Monday 25 December, 10.30am
- Mater Brisbane Hospital Chapel – Christmas Day Mass – Monday 25 December, 12.30pm

# Farewell!

It is with a heavy heart that we announce the departure of Dr. Gian Capati, Director of Clinical Training (DCT), on January 28th, 2024. Dr. Capati has been an invaluable member of our team, and his dedication and commitment to our mission have left an indelible mark on our organisation.

During his time at MEU, Dr. Capati's passion for excellence and tireless efforts have significantly contributed to the success and growth of our clinical training initiatives and the successful accreditation outcomes this year.

We would like to take this opportunity to express our sincere thanks to Dr. Capati for his unwavering commitment and the positive impact he has had on our organisation. His leadership, expertise, and genuine care for the development of our team have been truly inspiring.

As Dr. Capati embarks on a new chapter in his career, we extend our heartfelt congratulations and best wishes for all his future endeavors. We are confident that he will continue to excel in his chosen path, and we hope that the skills and knowledge he shared with us will continue to benefit those around him.



The DCT role is currently being advertised via Mater Careers

## Have you heard about sMater?

<https://youtu.be/ifKDxbUjXBk>



It is a podcast by doctors for doctors hosted by Brisbane-based television personality Jillian Whiting alongside Mater's own clinicians on a wide range of healthcare issues and conditions. The first series focuses on mothers and babies and delves into the world of preterm births with frontline obstetricians, neonatologists and midwives from Mater Mothers Hospitals at South Brisbane. This excellent learning resource is available via [Apple Podcasts](#) and [Spotify](#).

## Professional Development Opportunities

### [CTEC Department of Health WA](#)

These workshops are suitable for Unaccredited Registrars and SET and GSET Trainees in General Surgery.

Core Skills: [Laparoscopic General Surgery Workshop](#)

### [Mind\(re\)set Online Wellbeing Education and Training for JHO](#)

The program can be accessed via iLearn [here](#)

### [Registrations Now Open for CTETC's](#)

Please see attachments below for further information

#### [CTEC Workshop Calendar 2024](#)

#### [CTEC JDocs Emergency Airways Workshops 2024](#)

#### [CTEC JDocs Foundations Workshops 2024](#)

#### [Core Skills Intermediate Laparoscopic Skills Workshop](#)

#### [JDocs Introduction to Surgical Skills Workshops 2024](#)

#### [CTEC 2024 JDocs Emergency Procedures Workshops](#)

#### [CTEC Flyer 2023 GSS Training Course](#)

## [2024 Graduate Diploma in Child Health Updates](#)

Program fee: \$6000

Key Dates:

- 17 Dec 2023 Applications close for January 2024 intake
- 8 Jan 2024 Quarter 1 Session Commences
- 2 Feb 2024 Census date

For more information, please visit [here](#)



# Medical Education Update

## Dec 2023 - Term 5, Week 7

### Department Education Opportunities

Please contact the relevant unit Administration Officer for further details

#### Medical Grand Rounds

When: Monday 1 pm - 2 pm

Where: MS Teams

#### Med Reg ID Teaching

When: Thursday 1 pm - 2 pm

Where: MS Teams

#### Mater Young Adult and Mental Health Grand Rounds

Date: Tuesdays (fortnightly).

Time: 12 pm - 1 pm

Location: The Dome, Level 4 Salmon Building OR via Teams (Contact Helen Squibb for the teams link)

#### O&G RMO Teaching

Date: Thursdays

Time: 12.30 pm - 1.30 pm

Location: Room 5.3, MMH

#### Neonatal Teaching

When: Wednesday 2 pm - 4 pm

Where: Room 6.1 MMH or MS Teams (contact Julia Bosse for link)

#### QCH Paediatrics Grand Rounds

Date: Wednesdays

Time: 7 am

Location: Zoom

#### General Medicine Journal Club

When: Friday 1 pm - 2 pm

Where: Neuro ward Cnf Rm, Lvl 8 Salmon & MS Teams

#### ICU Teaching

Date: Thursdays (adhoc)

Time: 7.15 am - 8 am

Location: Contact Daphne Exelby for link

#### Surgical Grand Rounds

Date: Thursdays (adhoc)

Time: 7.15 am - 8 am

Location: Contact Alexandra Kreutzer for link

#### Neonatal Grand Round/Journal Club

When: Thursday 2.30 pm - 3.30 pm

Where: Room 6.1 MMH or MS Teams (contact Julia Bosse for link)

\*\*Every 1st Thursday of the month is combined Surgical / Neonatal teaching from 2-3pm instead - Room 6.1 MMH

#### Medical Registrar Teaching

When: Wednesday 1 pm - 2 pm

Where: Cnf Rm 4, level 3 MHB& MS Teams

## Drop In Sessions

### Patient Handling and Basic Life Support

Due to Christmas Closure there will be NO drop in sessions from 18th December 2023 to 14th January 2024.

Sessions will commence the week beginning 15th January 2024 on same days, at the same time, and same area.



### Important Procedure Reminder

These two procedures have recently been revised by HR. So please take the time to review.

[Workplace Bullying and discrimination](#)

[Resolution of Sexual Harassments Complaints](#)

### Medical Education Links and Resources

- Would you like to see the draft RMO Education Program or Intern Teaching program for 2023? Head to the Professional Development section of the [Medical Education Unit website](#). This website also contains your assessment links, unit handbooks, PD forms and more. The MEU website is also accessible via Zenworks or Intranet under Applications > Clinical Support
- [Mater Policy and Procedure Library \(MPPL\)](#) accessible internally or externally via this link
- List of [updated or new governance documents](#) (such as policies, frameworks, procedures, etc.)

### Support

The Mater [Wellbeing Resource for Resident Medical Officers](#) document lists a range of support contacts and resources available for RMOs.

If you need or would like support in any aspect of your work or personal life, the Medical Education Unit is available to point you in the right direction. You are more than welcome to contact us on the below extensions or stop by the office located on Level 4, Duncombe Building (Shaw Wing corridor) at any time. The MEU unit is open Monday to Friday 8 am to 4 pm.

#### Mater Statewide Medical Education and Workforce Services:

Olivia Paton: Director Medical Education and Workforce  
Mary Gardam: Principal Medical Education Officer x1560

#### Brisbane Medical Education:

- Dr Gian Capati: Director of Clinical Training x8229
- Carly Streek: Medical Education Officer x1994
- Sean MacNeilage: Medical Education Officer x7557
- Justine Reeves: Administration Officer x8272

#### Brisbane Medical Workforce:

- Emma Hewett: Medical Workforce Manager x8114
- Hayley Bracken: Talent Acquisition Advisor - Medical x1663
- Georgia Worth: HR Service Advisor - Immigration and Registration x 1256

